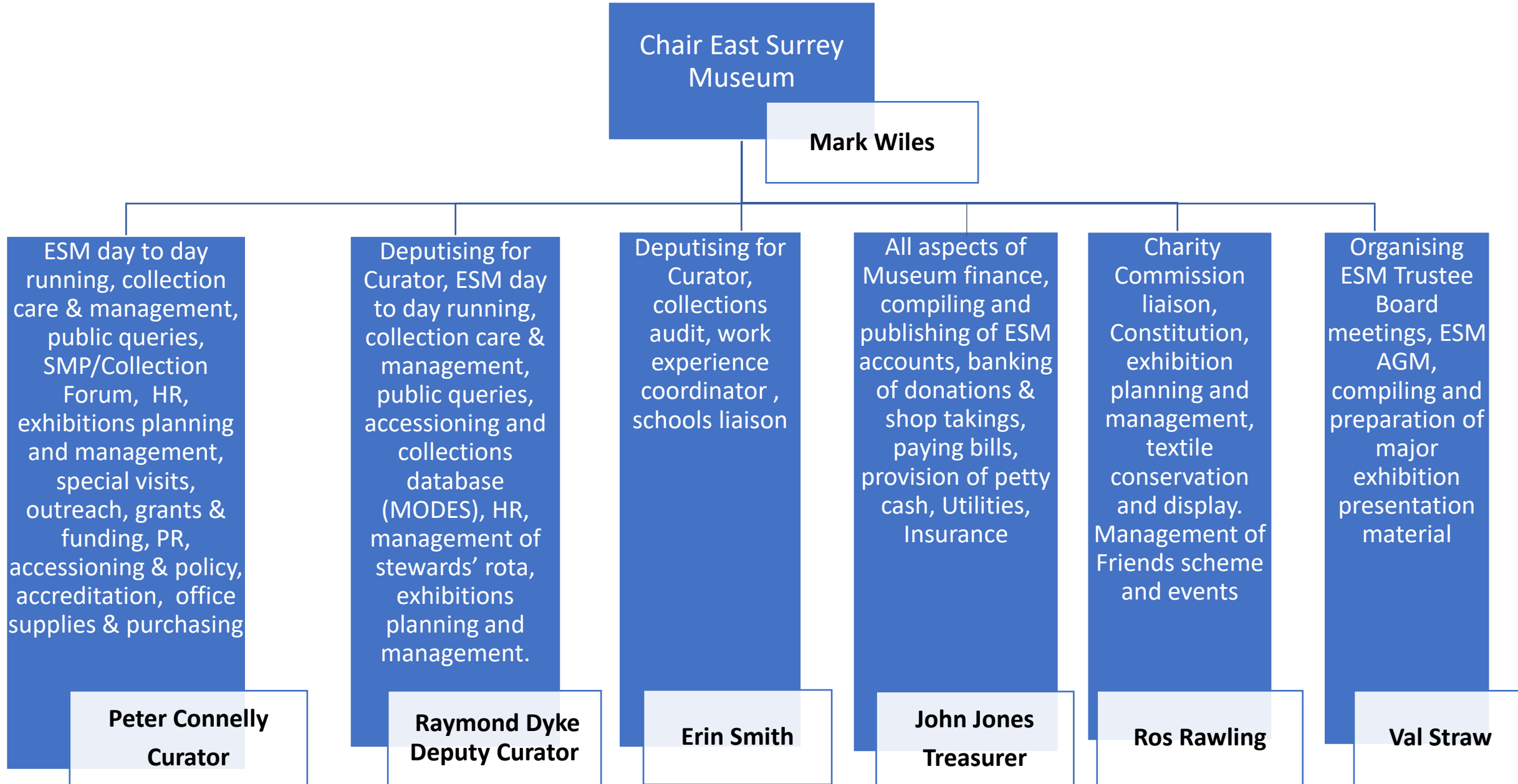


ESM Trustee Board (1)



Trustee Board (2)

Chair, East Surrey
Museum

Mark Wiles

Bourne
Society –
help, advice,
exhibits and
support.
Town Trails.

**Roger
Packham**

Tandridge
District
Council rep,
help, advice
and
support.

**Annette
Evans**

Asst. Treasurer
Support to
Treasurer with
all aspects of
museum
banking

**Maureen
Gibbins**

Retail
manager
Shop display,
stock
management
and ordering,
Soper Hall
liaison.

**Hilary
Hopkinson**

Safeguarding
Rep.
Help, advice
and support.

**Keith
Barrett**

Estate
management -
managing &
organising
repairs through
TDC, in-house
or contractors,
H&S,
Compliance,
Fire Rep &
accreditation
lead

**Mark
Wiles**

ESM
Newsletter
editor and
distribution,
help, advice
and support

**Tony
Hamilton**

ESM Trustee Board - Support

Displays and cataloguing

Creation of new exhibitions and displays, documenting object movements, MODES, accessioning/ deaccessioning and collection management

Fiona Wing

Children's Activity Co-Ordinator

Organising children's holiday activities, management of the Children's Room, children's museum trails

Sue Williams

Social Media

Facebook and Instagram management, Heritage Open Days

Catherine Allen

Website management

Help, advice and support.

Garry Brooks

Office administration

Filing, office organisation, emails, diary management for events/ visits/ outreach activities, schools/ organisations liaison, loan box management

Vacancy